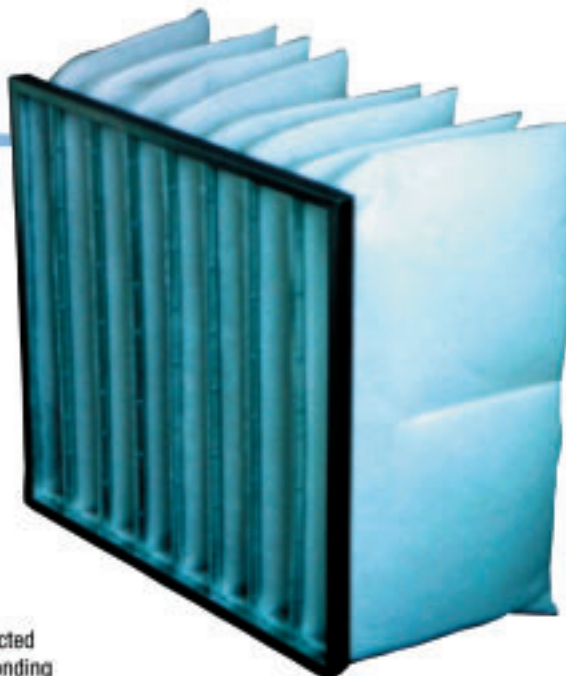


DriPak 25

High Performance Synthetic Media Pocket Filter

An outstanding medium efficiency filter, utilising a single layer of synthetic media. As a G3 rated 80% arrestance filter it is suitable for use as a prefilter to higher efficiency filters. It is characterised by a high dust holding capacity and long service life.



THE MANY FACETS OF DRIPAK EXTENDED SURFACE POCKET FILTERS

■ Designed for Performance

Since AAF originated the extended surface pocket filter concept in 1960, DriPak filters continuously set the industry performance standard for quality, reliability and service life.

The DriPak line of pocket filters have been developed to achieve optimum airflow through the pockets.

■ Maximised Dust Holding Capacity

The shape of the heat sealed pockets causes each one to fully inflate with the lowest resistance, utilising every square centimetre of media.

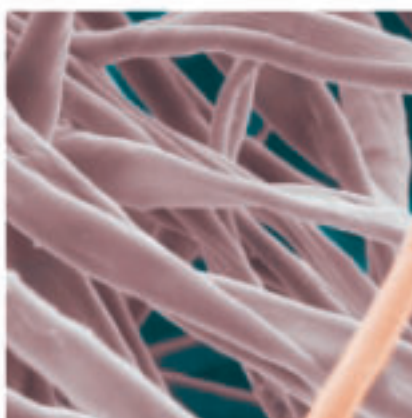
Dust holding capacity is maximised because dirt is evenly loaded throughout the entire depth of the filter. High dust holding capacity means longer life for each filter.

■ Mechanically Strong and Robust

DriPak 25 pocket filters are made of high quality synthetic media. They are renowned for their high performance characteristics in applications requiring a high dust holding capacity and higher air cleaning capacity. Built from strong, robust materials they display excellent abrasional resistance and perform well in 100% relative humidity and in high airflow and heavy dust loading conditions.

■ Media

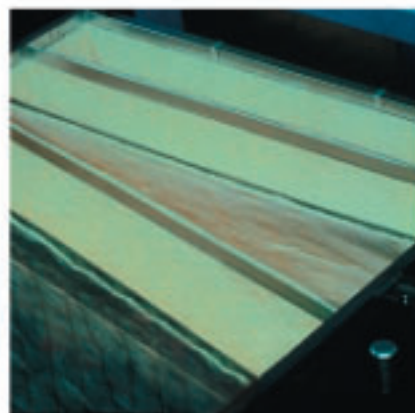
The filter media consists of selected synthetic fibres. An exclusive bonding technology provides the media with a high number of fibres per square metre for a given weight. Its characteristics are a relatively low resistance to air flow and a high dustholding capacity.



Unladen synthetic media (magnified 1000 x)

■ Sturdy Construction Provides Troublefree Performance

Each media pocket is attached to a support frame that is individually placed into a U-channel header. The pocket support frames are then mechanically fastened to the adjacent frame ensuring a rigid construction that does not collapse during handling and installation. Sandwiching the pockets between frames in this way not only prevents leakage between pockets but also provides a totally fail-safe construction that will withstand the toughest operating conditions. Support frames and header are galvanised steel.



Assembling a filter element

■ Comprehensive Testing

Extensive use is made of the ASHRAE/EN 779 test facilities (see picture). Filters from the production line are also regularly tested by independent test institutes to validate the specifications; a further guarantee for quality.



Performance testing in the EN 779 test dock.

■ Header and Support Frames

Support frames and headers are manufactured from corrosion resistant galvanised steel.



DriPak 25

Quality Assurance Programme

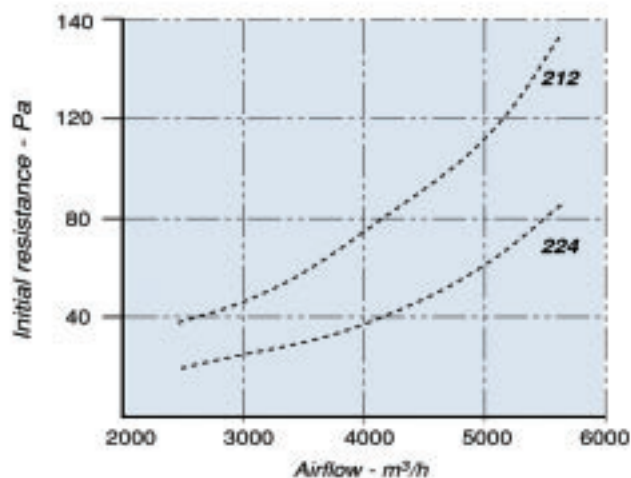
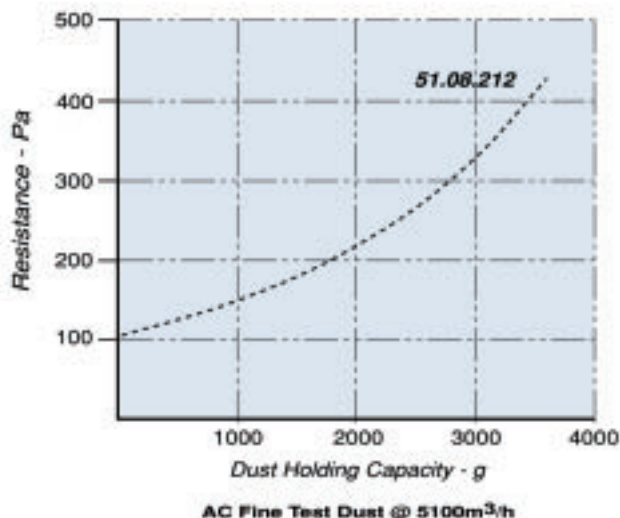
The Quality Assurance Programme for DriPak filters has been incorporated as an integral part of the manufacturing process. From raw materials to finished product, AAF quality checks ensure consistent and strict adherence to specifications.

Final Resistance

The recommended final resistance is 370 to 450 Pa. Filters can be operated to a lower final resistance without materially affecting filter efficiency, however dust holding capacity will be reduced as shown in the graph.

Notes

- Frame headers are 25mm deep.
- The DriPak filters are sized to fit in standard frame sizes 610 x 610 and 305 x 610.
- All performance data is based on EN 779 standard (ASHRAE 52.1 - 1992 test method).



DriPak 25 - Selection Chart

Style Code	Actual Size (w x h x d)mm	Number of Pockets	Gross Media Area (m ²)	Airflow Capacity (m ³ /h)	Initial Resistance Pa
51.08.212	592 x 592 x 305	8	3.2	5,100	115
52.04.212	287 x 592 x 305	4	1.6	2,550	115
51.08.216	592 x 592 x 405	8	4.2	5,100	90
52.04.216	287 x 592 x 405	4	2.1	2,550	90
51.08.224	592 x 592 x 610	8	6.4	5,100	65
52.04.224	287 x 592 x 610	4	3.2	2,550	65



10300 ORMSBY PARK PL STE 600
LOUISVILLE KY 40223-6169
P O BOX 35690
LOUISVILLE KY 40232-5690
www.aafintl.com

For Additional Information Call
888.AAF.3596
FAX 502.637.0147

