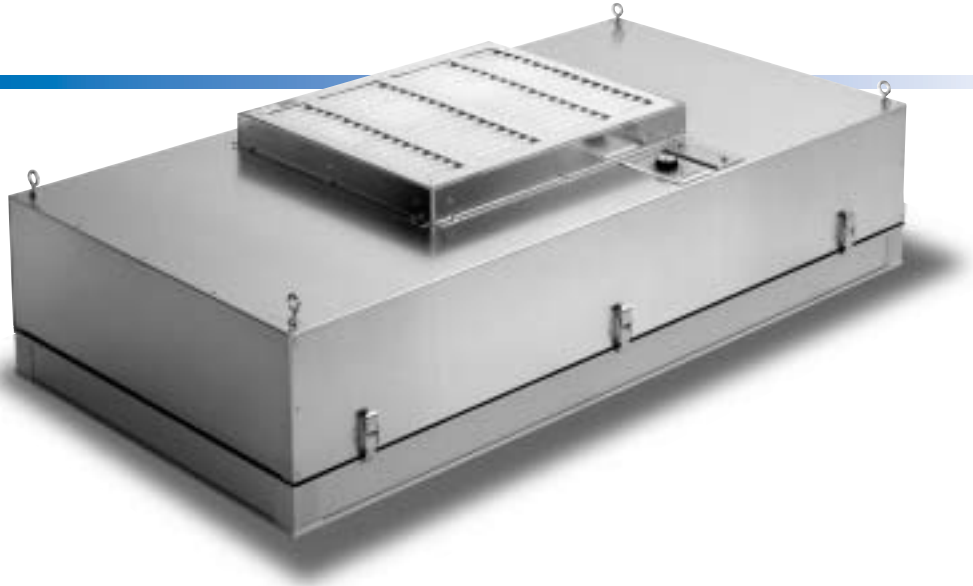


## FM2-LE

*Self-Contained,  
Energy Efficient  
Fan/Filter  
Modules for  
Cleanroom  
Applications*



The FM2-LE is a self-contained fan/HEPA filter module for cleanroom applications. It can be used to upgrade existing cleanrooms or to convert existing space into a cleanroom without additional ductwork or air handling equipment. The modules can be used in most conventional ceiling grids or may be suspended independently. FM2-LE modules are available in 2' x 2', 2' x 3', and 2' x 4' sizes.

### ENERGY EFFICIENT

FM2-LE modules are energy efficient. Each module utilizes a rugged AC motorized impeller rated at 2.4 amps at start up and approximately 2 amps while in operation. The aluminum backward curved impeller is lightweight has a long service life. All motors are dynamically balanced and 100% quality inspected.

### STANDARD FEATURES

- *Extruded aluminum filter cell sides*
- *AstroCel® II HEPA filter, 99.99% efficient on 0.3 micrometer particles, 2" deep minipleat media pack. HEPA meets UL 586 and UL 900*
- *White expanded metal faceguard on the downstream side of the filter*
- *16 gauge mill finish aluminum pressure housing with 4 support points for hanging*
- *115V, 60 Hz, 1 phase energy efficient backward curved motorized impeller wired junction box*

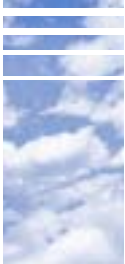
- *Variable speed control*
- *All electrical components UL Classified*
- *PerfectPleat® HC 1" deep prefilter with DuraFlex® media, MERV 7*

### OPTIONS

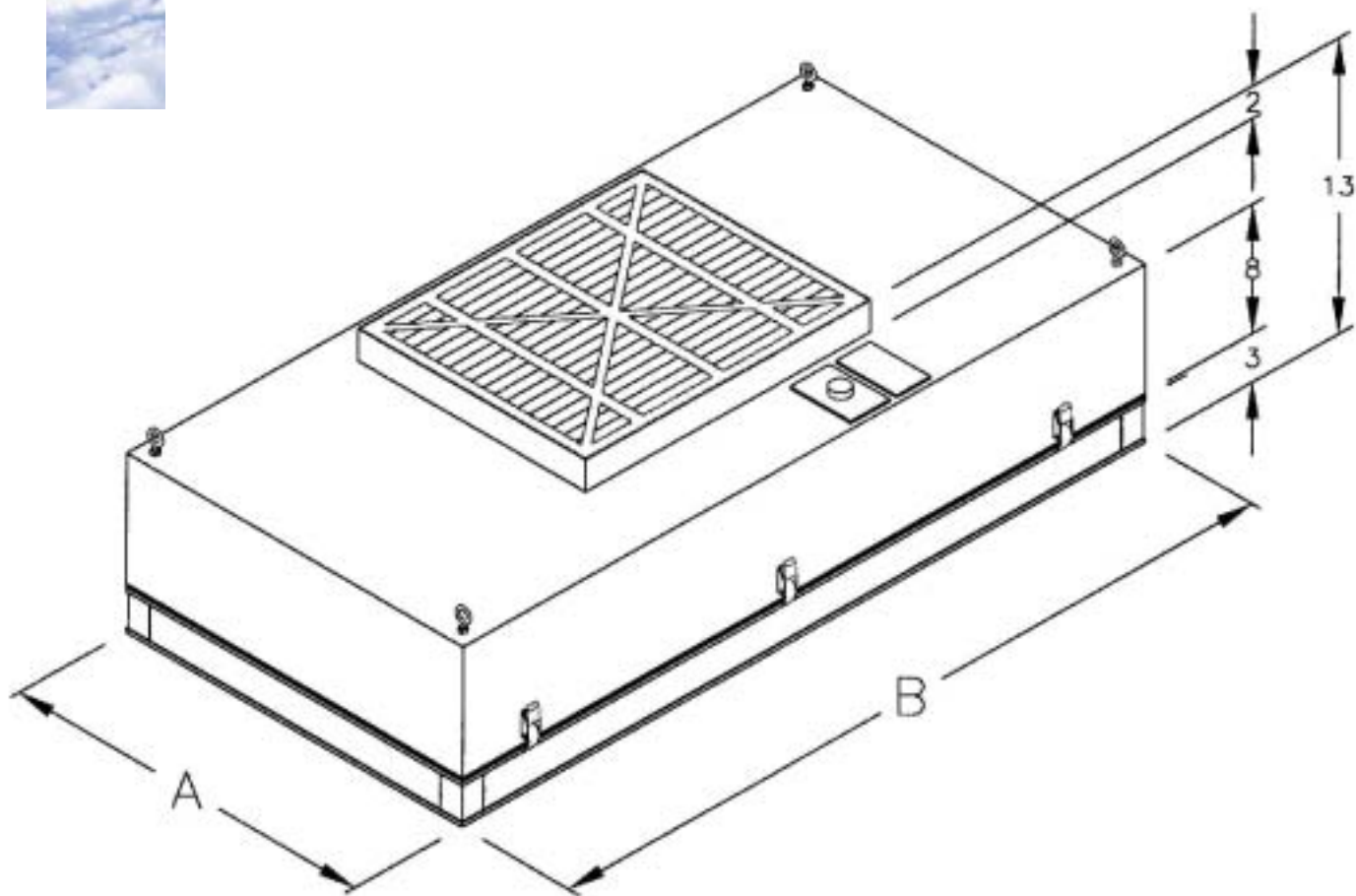
- *Duct connection (10" or 12" diameter) in lieu of prefilter*
- *Power cord*
- *Center divider with test port in filter*
- *ULPA filter, 99.9995% efficient on 0.1 - 0.2 micrometer particles, scanned*
- *3" or 4" deep HEPA or ULPA filter*
- *Knife edge filters for gel grid systems*
- *230 volt , 60 Hz motor*
- *Stainless steel faceguard*



*Latches seal and hold the AstroCel® filter securely to the module.*

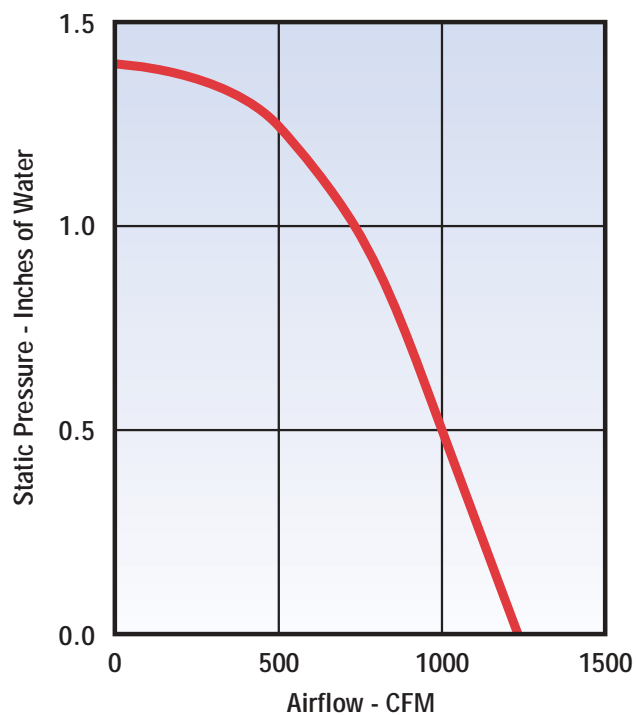


## FM2-LE Fan/Filter Module



### DIMENSIONS

PART NUMBER	A	B	UNIT WGT (LBS)	UNIT WGT (LBS)
3010352 -002	23-5/8	23-5/8	26	30
3010345 -002	23-5/8	35-5/8	40	50
3010337 -002	23-5/8	47-5/8	53	60



10300 ORMSBY PARK PL STE 600  
LOUISVILLE KY 40223-6169  
P O BOX 35690  
LOUISVILLE KY 40232-5690  
www.aafintl.com

For Additional Information On AAF Products,  
Call Customer Service  
**888.AAF.2003**

