

Mist Collectors

Pocket Filters and
Cartridge Filters



B E T T E R A I R I S O U R B U S I N E S S ®

AAF
INTERNATIONAL

3 and 4 Stage Mist Collectors

Mist generated by machining, forming and other manufacturing operations can affect OSHA and EPA compliance within the automotive, aerospace, can making, and other metalworking industries. AAF International's 3 and 4 stage Mist Collectors eliminate those problems efficiently and economically.

STANDARD FEATURES

- **Durable** — built with heavy-gauge steel construction throughout
- **Versatile** — perimeter frame allows for installation in a range of applications
- **Easy to maintain** — air- and oil-tight doors provide easy access to filter replacement
- **Easy to clean** — cleanout door is located at drain area
- **High quality** — AMCA Class II centrifugal fan has flexible vibration isolation
- **Dependable** — TEFC Motor and V-belt drive
- **High performance** — External static pressure 3-1/2" w.g.

CHOOSE FROM THESE OPTIONS TO SUIT YOUR SPECIFIC NEEDS

- **Support legs**
- **Drop-down filter racks for slide-in media replacement**
- **Fan rotations and discharges**
- **Remote fan or fan by others**
- **Motors, variable speed and HTD drives**
- **External static pressure 5-1/2" w.g. (higher available)**
- **Prewired starter and disconnect**

Filter Stages

1) INERTIAL SEPARATION STAGE

This section pre-cleans the incoming air stream, significantly reducing the loading to the second stage coalescing filter. The physical configuration of the collector causes the heaviest droplets to be delivered to the outlet drain. Heavier solid particulate, such as metal chips, are also intercepted and directed to the manual clean-out area.

2) COALESCING PRE-FILTRATION STAGE

This reusable, high-capacity, high-performance pre-filter stage coalesces the mist in the air stream and delivers it to the drain. The high ratio of metal mesh filter media to face area traps and holds solid particulate, resulting in longer third and fourth stage filter life. The coalescing filter is removable and designed to be steam cleaned and reused.

3A) "POCKET" FINAL FILTER STAGE

This replaceable final filter stage consists of a number of individual pockets formed from spun-bond, ultra-fine glass fiber. The filter media is laminated inside and out to a supporting scrim to provide strength and is factory attached to a rigid support frame. The filter is clamped securely into a holding frame in the oil mist collector. Each individual filter pocket is maintained in the extended position within the oil mist collector by support rods.

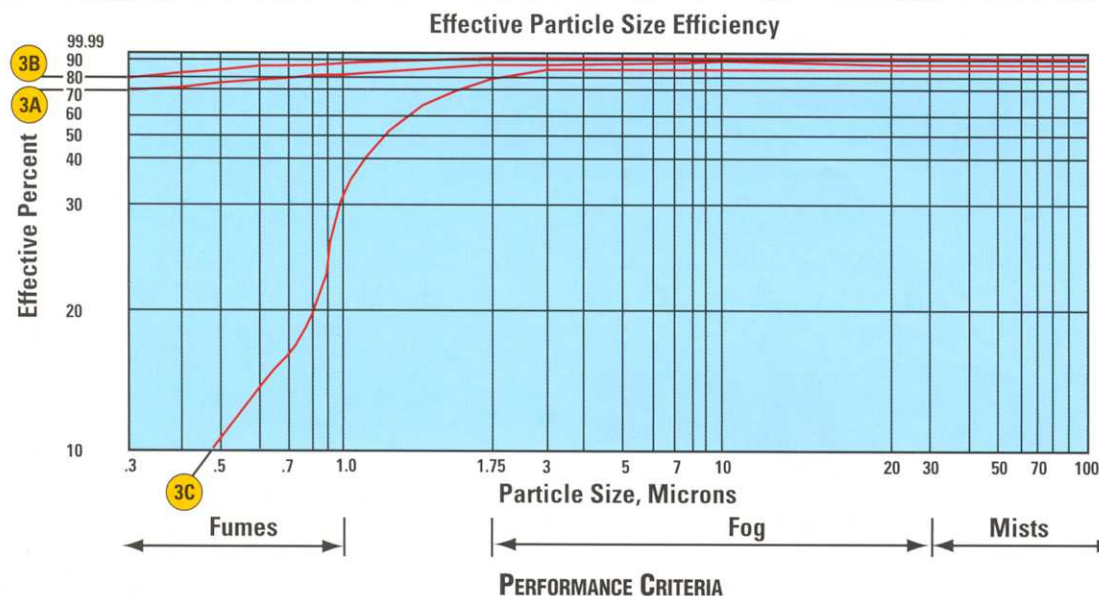
3B & 3C) "CARTRIDGE" INTERMEDIATE AND FINAL FILTER STAGE

This replaceable filter stage consists of pleated high-density microfine glass fiber laminated to a supporting scrim. The media is bonded to a welded wire support grid to provide consistent strength and performance throughout the life of the filter. The media is then factory installed into a rigid frame. The filter is clamped securely into a holding frame in the oil mist collector.

4) "CARTRIDGE" HEPA-STYLE FINAL FILTER STAGE

This replaceable final filter stage uses pleated high-strength, micro fiberglass filter media. The filter provides 95% efficiency on 0.3 micron particulate. Spacing between pleats is maintained using aluminum pleat separators. "Separatorless" construction is available as an option. The media is then completely sealed into a rigid frame. The filter is clamped securely into a holding frame in the oil mist collector.

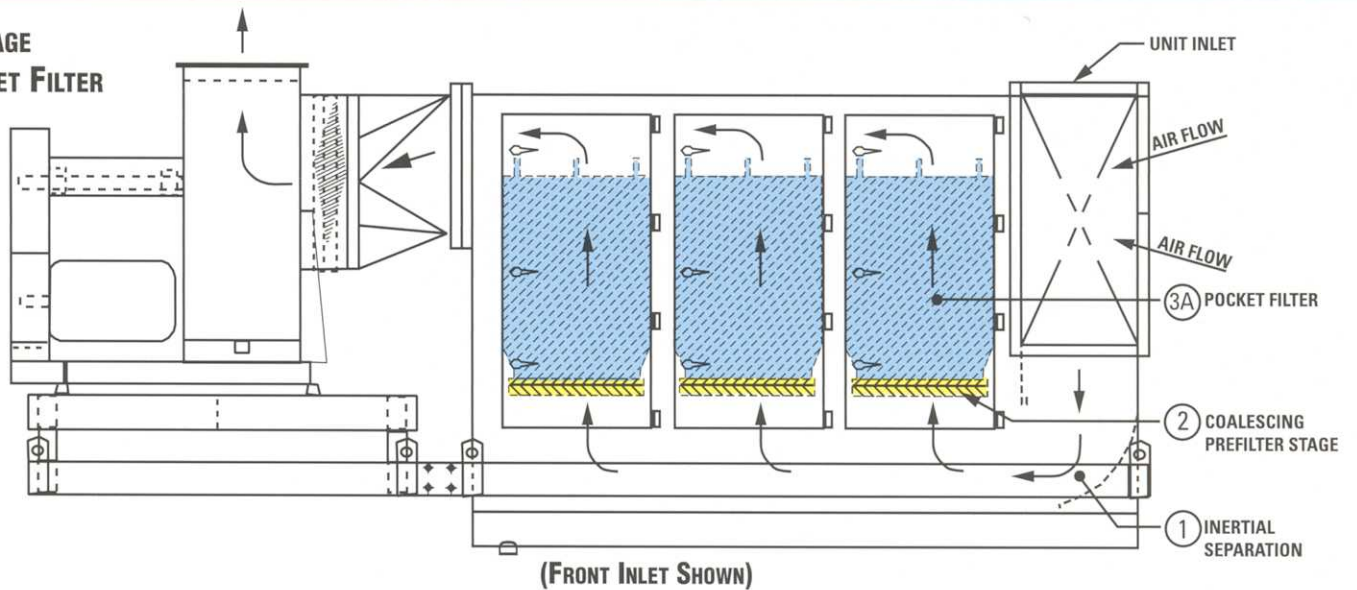
- All filters are designed to operate when saturated with the collected mist.
- The oil mist collector is designed for 180°F continuous operation and 200°F intermittent operation.



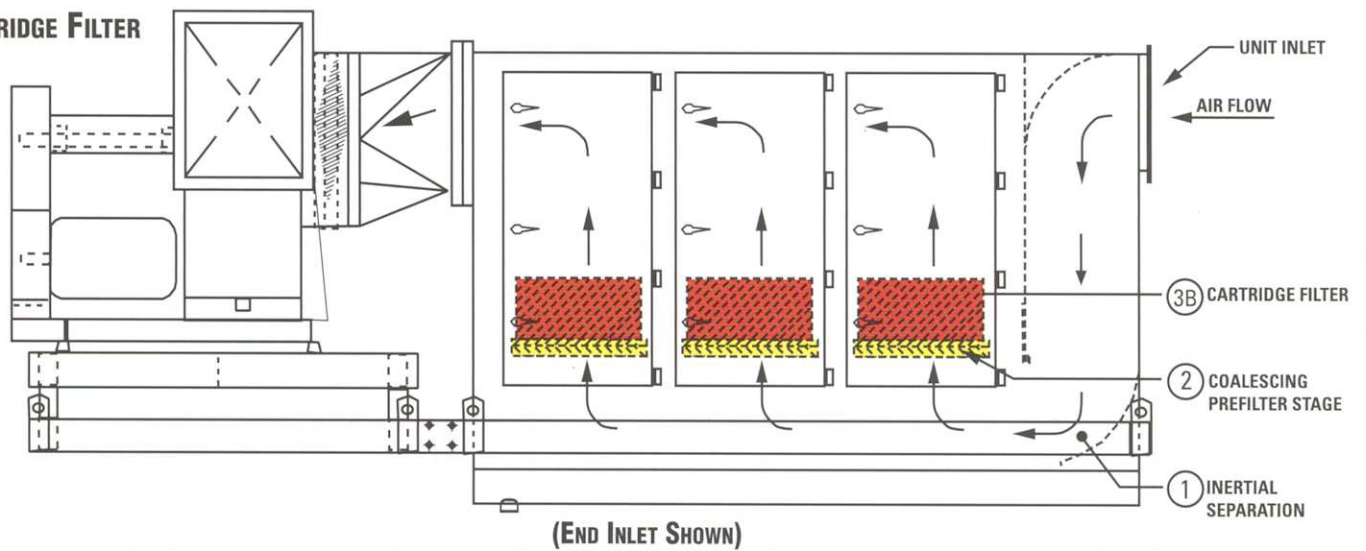
EFFICIENT AND ECONOMIC PERFORMANCE

AAF International's 3 and 4 stage Mist Collectors perform efficiently at volumes from 2,000 CFM to 24,000 CFM. The collector employs primary and secondary separation to achieve longer third and fourth stage filter media life.

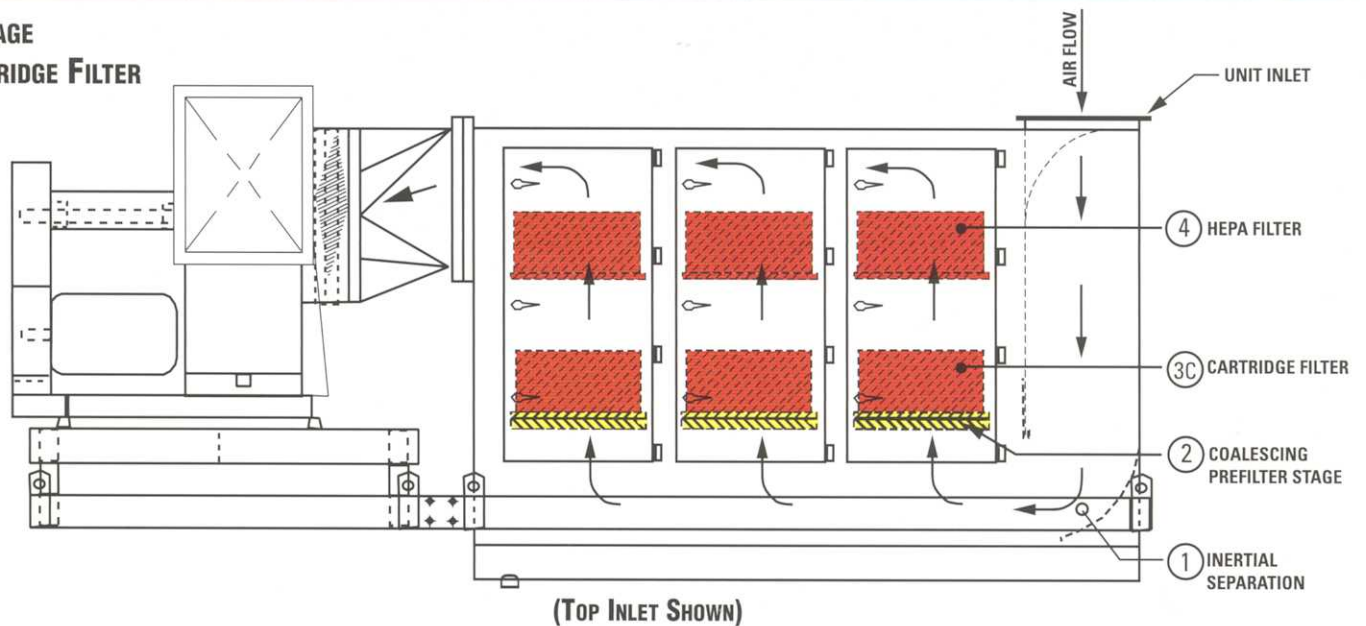
3-STAGE POCKET FILTER



3-STAGE CARTRIDGE FILTER

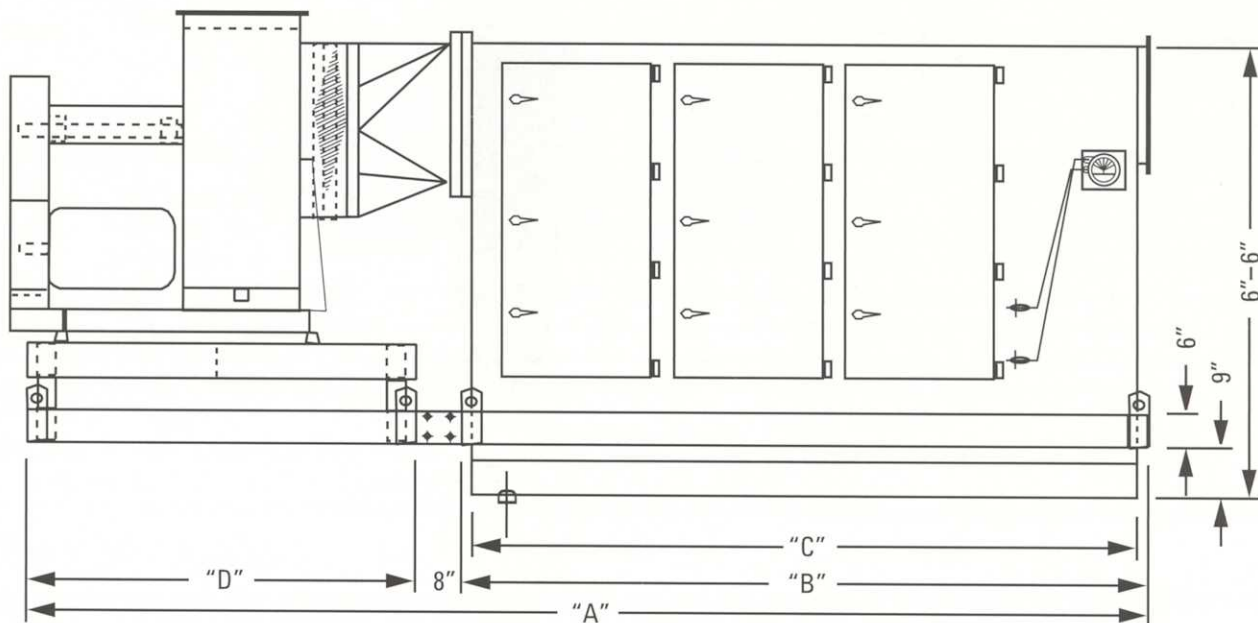


4-STAGE CARTRIDGE FILTER



All Collectors Are Available With End, Top, Front or Rear Inlets

Dimensions-All Units



Unit Dimensions									Motor Horsepower			
									3-Stage		4-Stage	
Model	CFM	Unit Depth	Unit Height	"A"	"B"	"C"	"D"	Doors/Unit	3.5" S.P.	5.5" S.P.	3.5" S.P.	5.5" S.P.
OMC-2	2,000	2'-8"	6'-6"	6'-11"	3'-0"	2'-8"	3'-3"	1 on 1 Side	3	5	5	5
OMC-4	4,000	4'-11"	6'-6"	9'-7"	4'-5"	4'-1"	4'-6"	1 on 1 Side	5	7.5	7.5	10
OMC-8	8,000	4'-11"	6'-6"	13'-9"	7'-5"	7'-1"	5'-8"	2 on 1 Side	10	15	15	20
OMC-12	12,000	4'-11"	6'-6"	16'-5"	10'-1"	9'-9"	5'-8"	3 on 1 Side	15	25	20	25
OMC-18	18,000	6'-11"	6'-6"	18'-1"	10'-5"	10'-1"	7'-0"	3 on 2 Sides	25	30	30	40
OMC-24	24,000	6'-11"	6'-6"	21'-7"	13'-5"	13'-1"	7'-6"	4 on 2 Sides	30	40	40	50

Dimensions shown may vary and must not be used for construction purposes. Verification of dimensions and applications must be made through AAF International Engineering Department.

Note: For flexibility, the unit may be furnished with fan mounted on the right or left side. Inlet is always on the opposite end. All collectors are available with end, top, front or rear inlets.

For further information on this and other AAF International products, go to aafintl.com