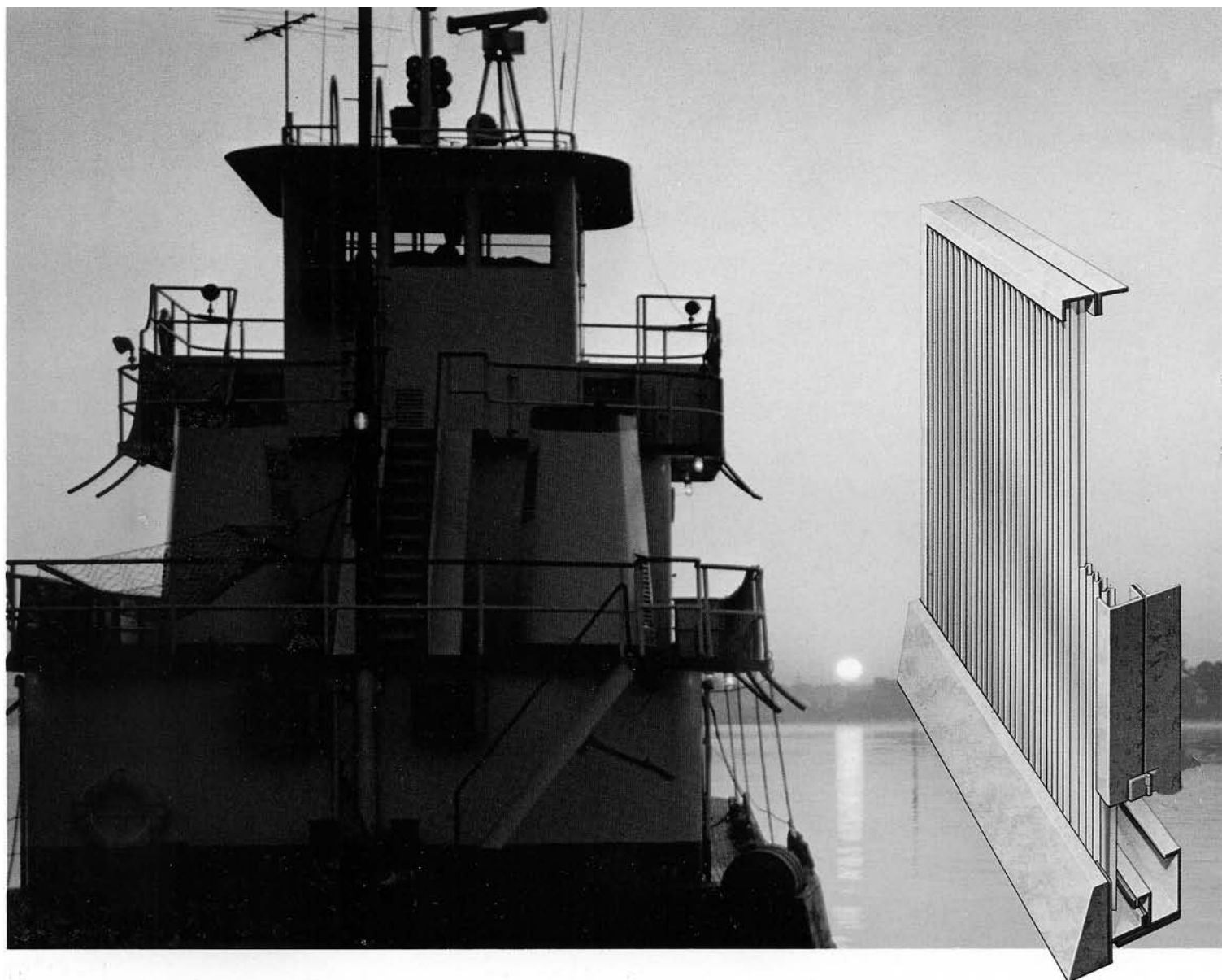


MARINE

AMER-kleen cartridge filters for
marine and stationary applications.





AMER-kleen cartridge filters clean engine

AMER-kleen cartridge filters clean engine intake air efficiently and economically.

Features include:

- High filtering efficiency
- High dust holding capacity
- Low operating cost
- Ease of installation and maintenance
- Long service life

For years the AMER-kleen cartridge filter has been used successfully to clean the intake air for high horsepower engines. The filtering efficiency, operating

economies and performance characteristics of these glass fiber filters makes them ideally suited for cleaning the intake air to engines located in virtually all climates, whether it be humid or arid, hot or cold.

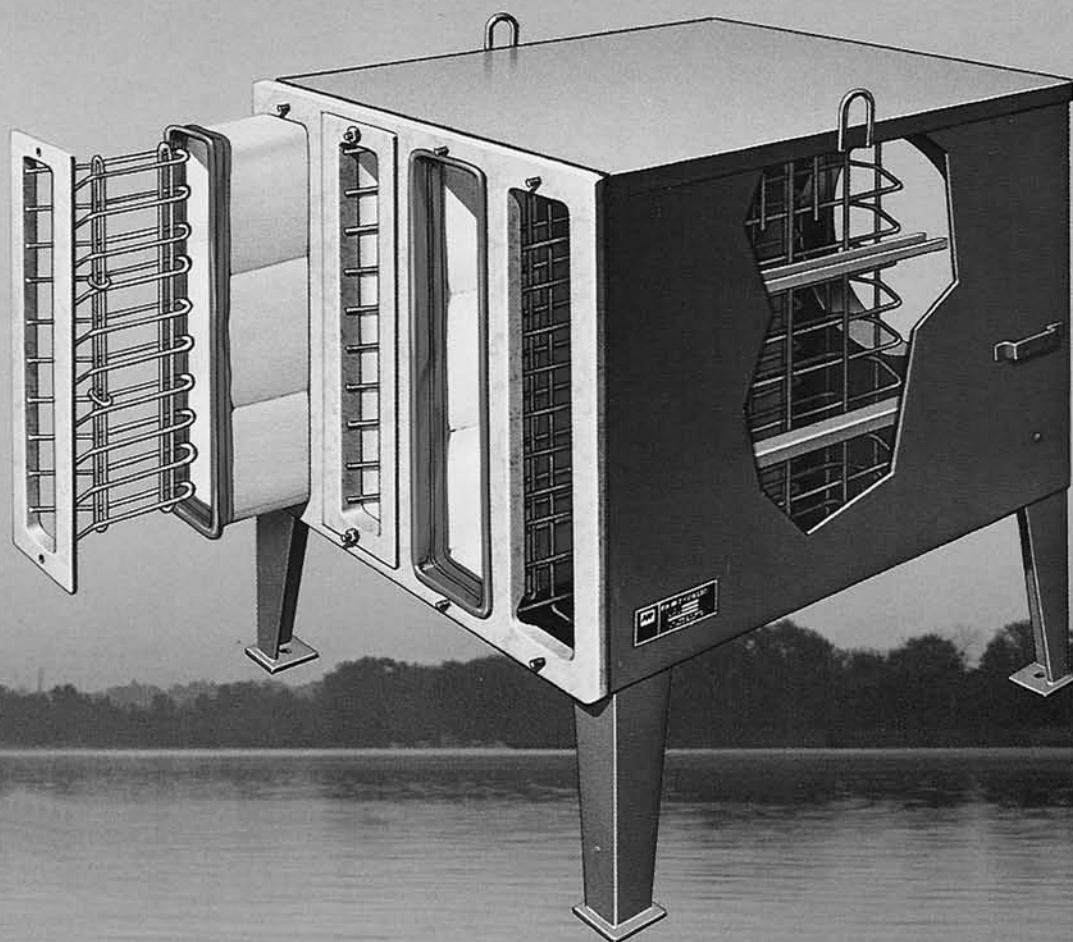
CONSTRUCTION:

The AMER-kleen filter features the unique "Double-Pak" design. The filter is constructed from two layers of glass fiber media carefully sewn into a cartridge configuration. This double layer

of media not only provides an extremely high dust holding capacity, but offers filtering efficiency of 96% by a modified AFI test procedure.

LONG SERVICE LIFE:

The AMER-kleen's extremely high dust holding capacity allows it to remain in service longer than most other intake air filters, without significant increases in operating resistance. Most important the AMER-kleen cartridge performance characteristics permit scheduling filter maintenance on either a time basis



intake air efficiently and economically.

or engine hours rather than relying on manometer readings.

FUEL EFFICIENT:

Tests by a leading engine manufacturer show that the AMER-kleen cartridge filter offers important fuel savings over paper filters and other filters which operate with higher air flow resistance. The design of the AMER-kleen cartridge filter offers not only a low initial resistance, but also low operating resistance. And, most importantly, the resistance of the AMER-kleen filter is relatively constant over the scheduled life of the filter.

THREE SIZES FIT ALL:

The AMER-kleen filter is available in three sizes, 600 cfm, 1200 cfm and 2500 cfm. Cartridges can be used in multiples in one filter housing to meet the air flow requirements of the engine.

EASE OF INSTALLATION:

AMER-kleen filters can be changed quickly, without special tools or trained personnel. Simply remove two lock-nuts and remove the sealing frame. The cartridge slips out and a new one is inserted. Replace the sealing

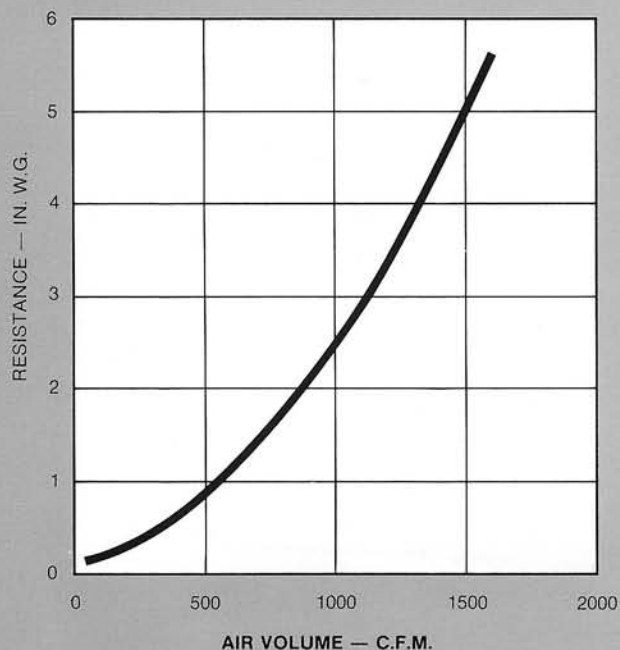
frame and lock-nuts and the filter is automatically sealed air-tight. If necessary, the filter can even be replaced while the engine is operating.

WEATHER PROTECTION:

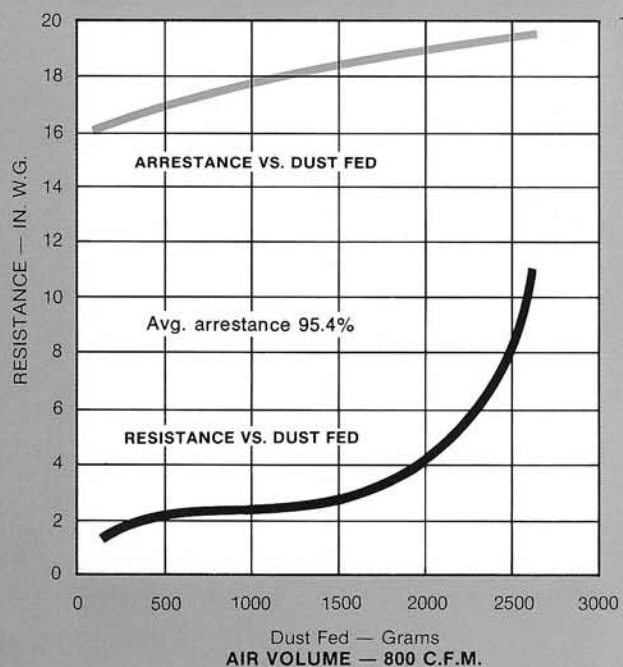
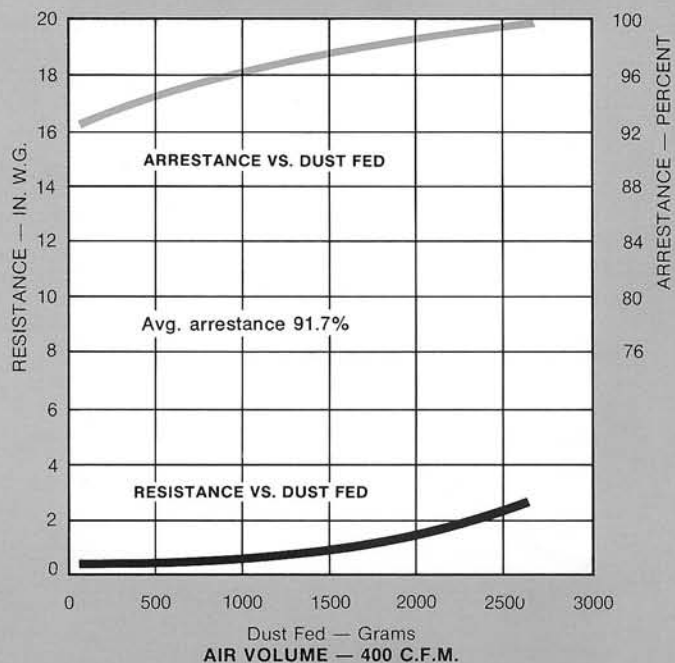
An optional high velocity weather louver assembly is available for those applications where weather protection is required. The louver allows the filter housing to be used on outside applications such as on deck aboard ships or on oil drilling rigs.

Performance Data – Size 1200

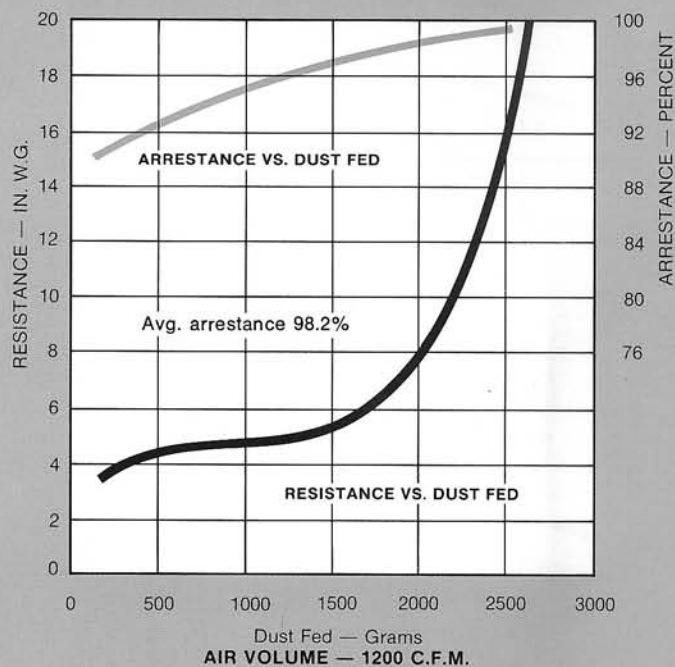
AMER-KLEEN CARTRIDGE DOUBLE-PAK



Note: Weather Louver will increase resistance .3 in. w.g. at rated airflow.



Dust Fed — Grams
AIR VOLUME — 800 C.F.M.

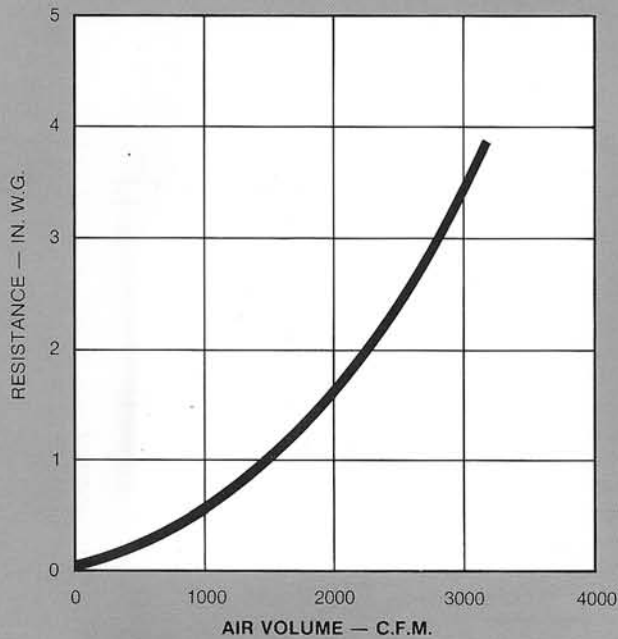


Dust Fed — Grams
AIR VOLUME — 1200 C.F.M.

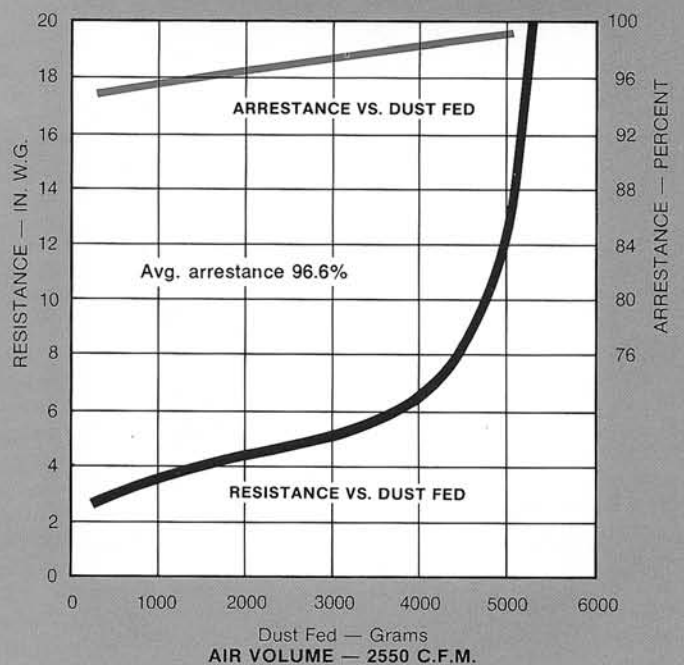
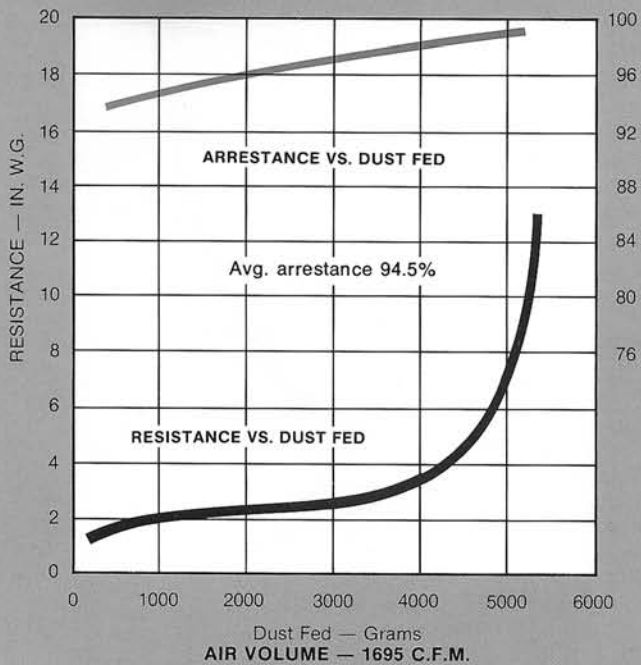
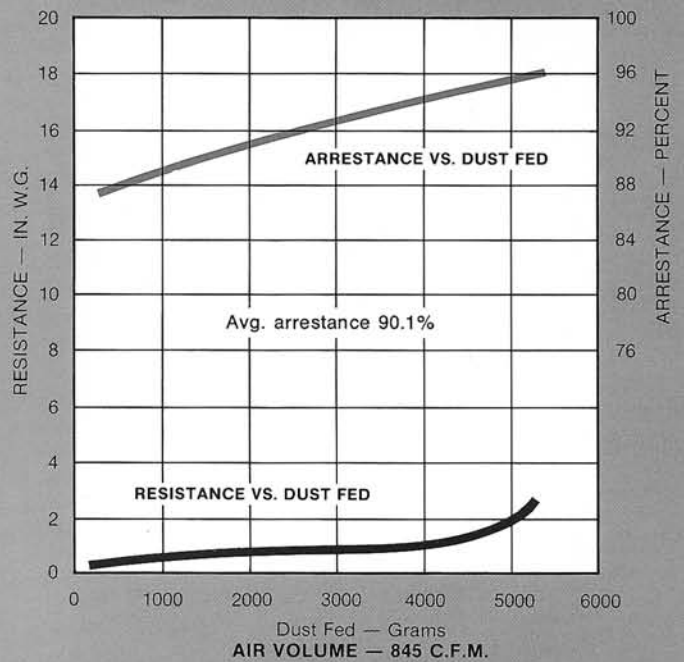
TEST PROCEDURE. Tested in A.F.I. test duct per A.F.I. test method except: 1—Air volume changed at hourly intervals from 1200 CFM to 800 CFM to 400 CFM. 2—Arizona road dust, fine, fed to filter. 3—Dust fed at rate of 45 grams per hour for all three air volumes. Concentration at intermediate and low flows were one and one-half and three times standard. 4—An enlarged A.F.I. type dust feeder was used.

Performance Data—Size 2500

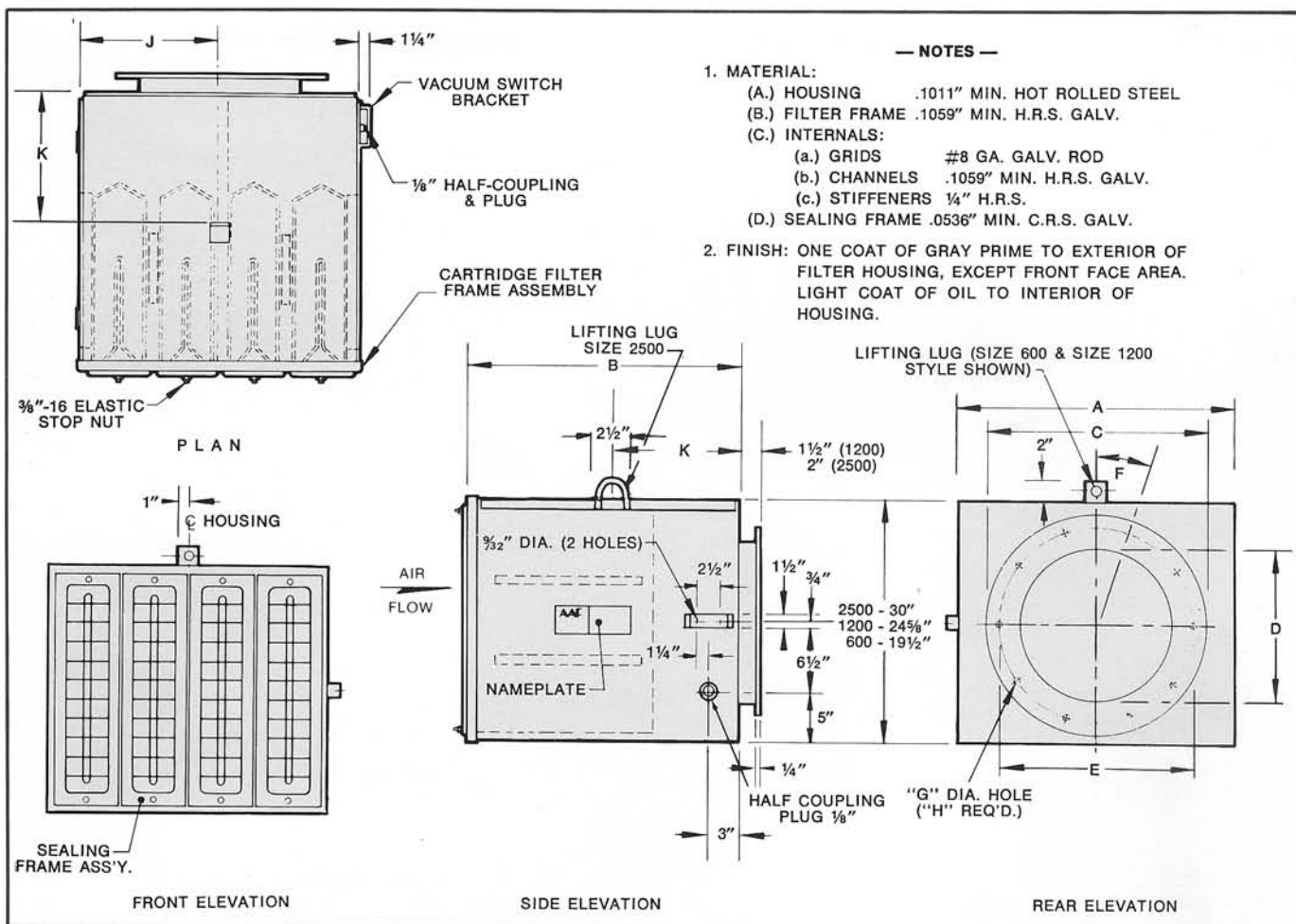
AMER-KLEEN CARTRIDGE DOUBLE-PAK



Note: Weather Louver will increase resistance .3 in. w.g. at rated airflow.



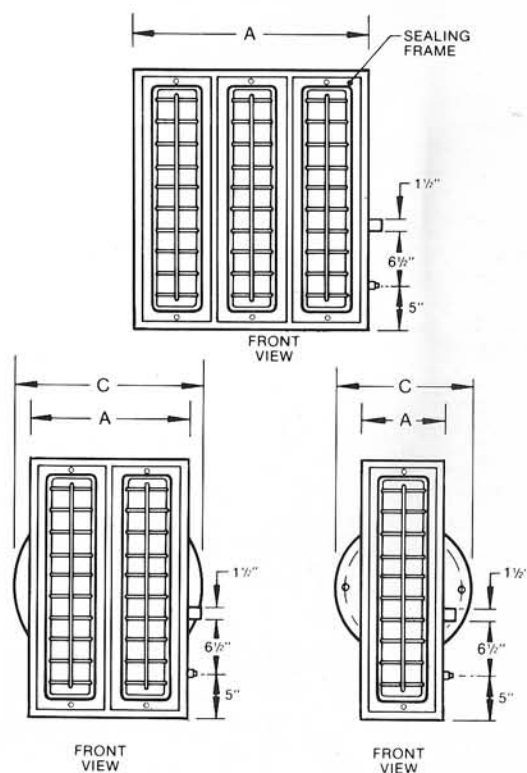
TEST PROCEDURE. Tested in A.F.I. test duct per A.F.I. test method except: 1—Air volume changed at hourly intervals from 2550 CFM to 1695 CFM to 845 CFM. 2—Arizona road dust, fine, fed to filter. 3—Dust fed at rate of 96 grams per hour for all three air volumes. Concentration at intermediate and low flows were one and one-half and three times standard. 4—An enlarged A.F.I. type dust feeder was used.



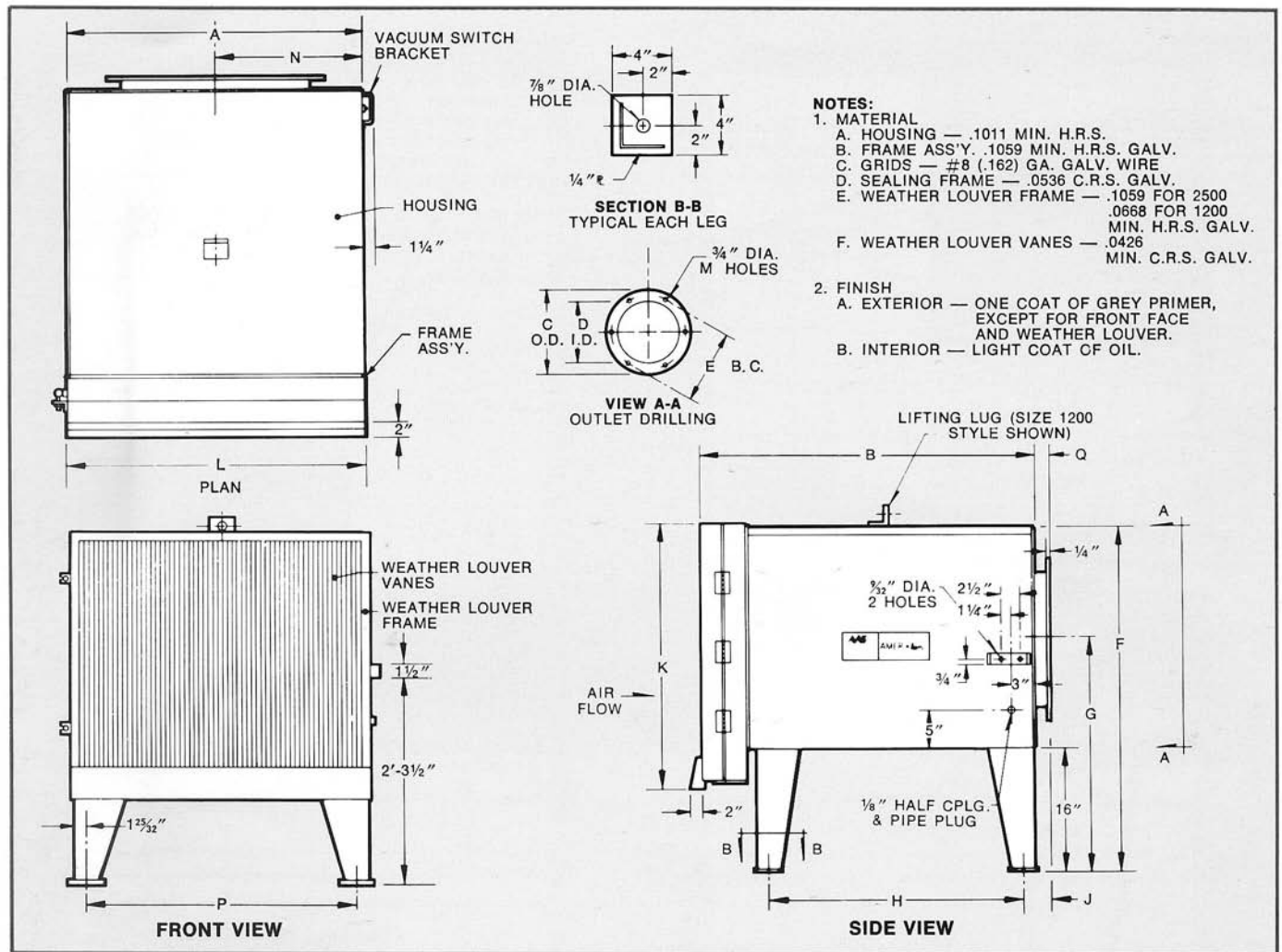
	A	B	C	D	E	F	G	H	J	K	APPROX. WEIGHT
ONE FILTER CELL	7 $\frac{1}{16}$	21	12	6	10	0	$\frac{3}{4}$	4	3 $\frac{3}{32}$	9 $\frac{1}{2}$	75 LBS.
TWO FILTER CELLS	14 $\frac{1}{16}$	21	14	8	12	0	$\frac{3}{4}$	4	7 $\frac{7}{32}$	9 $\frac{1}{2}$	100 LBS.
THREE FILTER CELLS	21 $\frac{1}{16}$	21	16	10	14	30	$\frac{3}{4}$	6	10 $\frac{13}{32}$	9 $\frac{1}{2}$	140 LBS.
FOUR FILTER CELLS	28 $\frac{1}{16}$	21	18	12	16	30	$\frac{3}{4}$	6	14 $\frac{13}{32}$	9 $\frac{1}{2}$	165 LBS.

	A	B	C	D	E	F	G	H	J	K	APPROX. WEIGHT
ONE FILTER CELL	7 $\frac{1}{16}$	28	10	7	8 $\frac{3}{4}$	0	$\frac{3}{4}$	4	32 $\frac{3}{32}$	13 $\frac{1}{8}$	105 LBS.
TWO FILTER CELLS	14 $\frac{1}{16}$	28	15	12	13 $\frac{3}{4}$	30	$\frac{3}{4}$	6	7 $\frac{1}{32}$	13 $\frac{1}{8}$	145 LBS.
THREE FILTER CELLS	21 $\frac{1}{16}$	28	17	14	15 $\frac{1}{4}$	18	$\frac{3}{4}$	10	102 $\frac{3}{32}$	13 $\frac{1}{8}$	195 LBS.
FOUR FILTER CELLS	28 $\frac{1}{16}$	28	19	16	17 $\frac{1}{4}$	18	$\frac{3}{4}$	10	14 $\frac{1}{2}$	13 $\frac{1}{8}$	235 LBS.

	A	B	C	D	E	F	G	H	J	K	APPROX. WEIGHT
ONE FILTER CELL	10⅞	40	15½	9½	13½	30	¾	6	5⅞	22½	100 LBS.
TWO FILTER CELLS	19⅞	40	22	16	20	22½	¾	8	9⅞	22½	140 LBS.
THREE FILTER CELLS	28	40	26	20	24	18	¾	10	14⅞	22½	200 LBS.
FOUR FILTER CELLS	36⅞	40	30	24	28	18	¾	10	18½	22½	270 LBS.



Weather louver housing dimensions

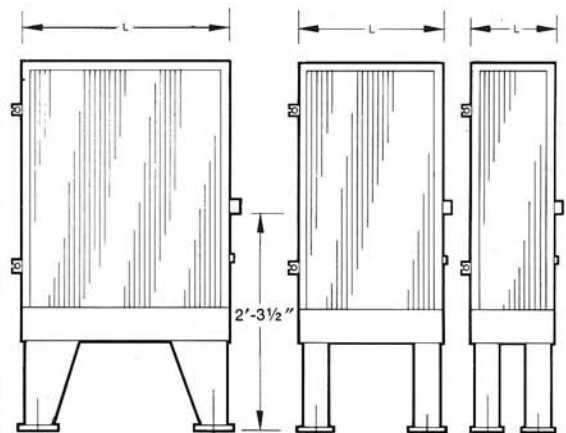


SIZE 1200 AMER-Kleen FILTER HOUSING

	A	B	C	D	E	F	G	H	J	K	L	M	N	P	Q	APPROX. WEIGHT
ONE FILTER CELL	7 ¹³ / ₁₆	33 ¹ / ₄	10	7	8 ³ / ₄	40%	28 ⁵ / ₁₆	22 ³ / ₄	3 ¹ / ₈	30 ³ / ₃₂	8 ¹ / ₄	4	3 ⁷ / ₃₂	4 ¹ / ₁₆	1 ¹ / ₂	167 LBS.
TWO FILTER CELLS	14 ¹¹ / ₁₆	33 ¹ / ₄	15	12	13 ³ / ₄	40%	28 ⁵ / ₁₆	22 ³ / ₄	3 ¹ / ₈	30 ³ / ₃₂	15 ¹ / ₈	6	7 ⁷ / ₃₂	11 ¹ / ₁₆	1 ¹ / ₂	226 LBS.
THREE FILTER CELLS	21 ¹ / ₁₆	33 ¹ / ₄	17	14	15 ³ / ₄	40%	28 ⁵ / ₁₆	22 ³ / ₄	3 ¹ / ₈	30 ³ / ₃₂	22	10	10 ³ / ₃₂	18 ¹ / ₁₆	1 ¹ / ₂	323 LBS.
FOUR FILTER CELLS	28 ⁵ / ₁₆	33 ¹ / ₄	19	16	17 ³ / ₄	40%	28 ⁵ / ₁₆	22 ³ / ₄	3 ¹ / ₈	30 ³ / ₃₂	28 ⁷ / ₁₆	10	14 ¹ / ₃₂	25 ¹ / ₁₆	1 ¹ / ₂	382 LBS.

SIZE 2500 AMER-Kleen FILTER HOUSING

	A	B	C	D	E	F	G	H	J	K	L	M	N	P	Q	APPROX. WEIGHT
ONE FILTER CELL	10 ¹ / ₄	45 ¹ / ₂	15 ¹ / ₂	9 ¹ / ₂	13 ¹ / ₂	46	31	34 ¹ / ₂	3 ³ / ₈	35 ¹ / ₁₆	10 ¹ / ₁₆	6	5 ¹ / ₁₆	7 ¹ / ₁₆	2	272 LBS.
TWO FILTER CELLS	19 ¹ / ₈	45 ¹ / ₂	22	16	20	46	31	34 ¹ / ₂	3 ³ / ₈	35 ¹ / ₁₆	19 ¹ / ₈	8	9 ¹ / ₂	16	2	362 LBS.
THREE FILTER CELLS	28	45 ¹ / ₂	26	20	24	46	31	34 ¹ / ₂	3 ³ / ₈	35 ¹ / ₁₆	28 ¹ / ₈	10	13 ¹ / ₁₆	24 ¹ / ₁₆	2	471 LBS.
FOUR FILTER CELLS	36 ¹ / ₈	45 ¹ / ₂	30	24	28	46	31	34 ¹ / ₂	3 ³ / ₈	35 ¹ / ₁₆	37 ¹ / ₈	10	18 ¹ / ₂	33 ¹ / ₁₆	2	562 LBS.



American Air Filter has a policy of continuous product research and improvement and reserves the right to change design and specifications without notice.



10300 ORMSBY PARK PL STE 600
LOUISVILLE KY 40223-6169
P O BOX 35690
LOUISVILLE KY 40232-5690
www.aafintl.com

RRP-1-611C

APR '05

For Additional Information Call

888.388.0529

FAX 888.398.0529

AAF has a policy of continuous product research and improvement and reserves the right to change design and specifications without notice.



©2005 AAF INTERNATIONAL